



**CAMPUS
LIFE**[®]
MIDDLE SCHOOL

June 2019

Hats Off To High School Graduates

DEAR FRIENDS AND FAMILY,

Joslyn's been attending church with us on and off since sixth grade. On Sunday, Joslyn was recognized on stage as graduate at FCF Church. I remember her in 6th grade and have seen how God has moved in her life as faith was grounded. Praise God for His work in her and the blessing to be able to see the Holy Spirit at work!

Honoring three graduates, who committed over 800 total hours of service to Campus Life .

- **Miss Belinda "Joslyn" Chigonera** completed 342 hours. Joslyn is personable, intelligent, and a joy to work with. Her leadership grew greatly because of her personal effort and willingness to share time with others.
- **Mr. Shaunese Swails** completed 242 hours. He has always been **energetic**, kind, and respectful. As he grew in faith of Jesus, Shaun accepted all kids as His and ensured a fun, safe environment for all. Way to go, Shaun!
- **Miss Pearl Pobe** completed 220 hours. She is friendly, cooperative, and fun-loving. Pearl is also ambitious and funny. This year Pearl was the high school Core liaison encouraging peers to grow deeper in knowledge of Christ. Love you, Pearl!

Please pray for them and their futures!

FUTURE? We met many 6th graders this year at our four clubs. Who will be the next student leaders? Indigenous leaders... kids who put their faith In Christ and are willing to sacrifice to give back to the Campus Life community? **Imagine the impact on Frederick if we are able to groom and multiply more young leaders every year.**

It takes an army of volunteers: game leaders, lesson presenters, food team members, data entry, photographers, chaperones, and more. And, **we have grown well beyond what I can do alone or lead.** Are you inspired to give some time too? I'd love to hear about your God-given gifts and see how we can invest your time. It's worth it!

Praying for workers in the Harvest, Cindy

When Jesus saw the crowds, he had compassion on them, because they were harrassed and helpless, like sheep without a shepherd. Then he said to his disciples, "The harvest is plentiful but the workers are few. Ask the Lord of the harvest, therefore, to send out workers into his harvest field."
Matthew 9:36-38 NIV



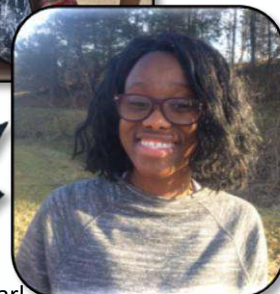
Joslyn



Joslyn and Shaun



Shaun



Pearl